

# ROUGH COUNTRY

## SUSPENSION SYSTEMS®

### 07-18 JK HD TIRE CARRIER HINGE

**Thank you for choosing Rough Country for all your vehicle needs.**

Please read instructions before beginning installation. Check the kit hardware against the kit contents shown below. Be sure you have all needed parts and know where they go.

If question exist, please call us @1-800-222-7023. We will be happy to answer any questions concerning the design, function, and correct use of our products.

**NOTICE:** Be sure support the tailgate before removing the tail gate hardware.

If using stock wheels or stock wheel offset this kit could require the use of a wheel spacer to ensure proper fitment.

#### KIT CONTENTS:

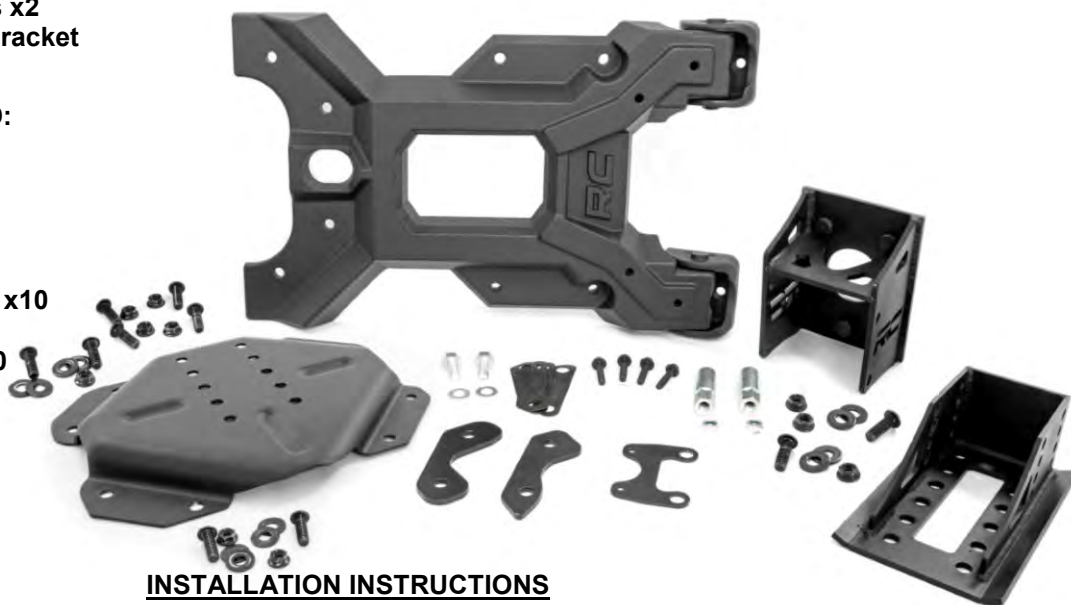
HD Tailgate Hinge  
 Wheel bracket Mount  
 Wheel mount Inner  
 Wheel mount outer  
 2-Shims  
 4-Gaskets  
 2- Tailgate Cover gaskets x2  
 3rd Brake Light Relocation Bracket

#### TOOLS NEEDED:

T50 Torx Driver  
 T20 Torx Driver  
 17mm Socket  
 16mm Socket  
 13mm Socket  
 12mm Socket

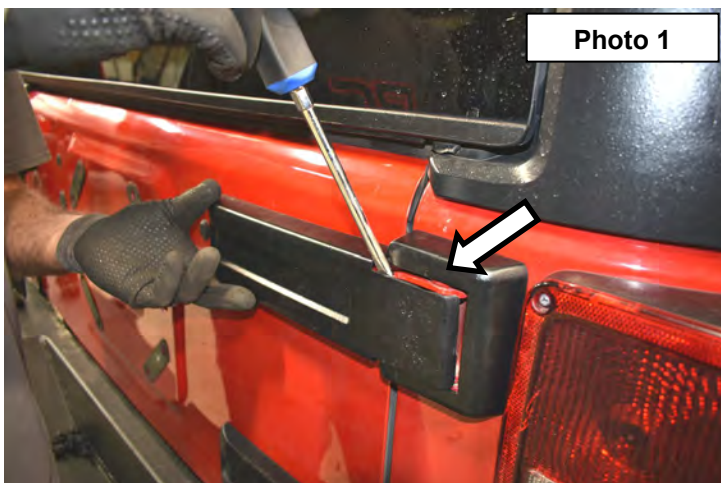
#### HARDWARE INCLUDED:

8mm x 35mm Bolts x4  
 8mm Flat Washer x4  
 1/2" lug nuts x2  
 1/2"x 1" bolts x2  
 1/2" Lock Washers x2  
 10mm x 30mm Allen Bolts x10  
 10mm Lock nut x10  
 10mm Flat Washers x10

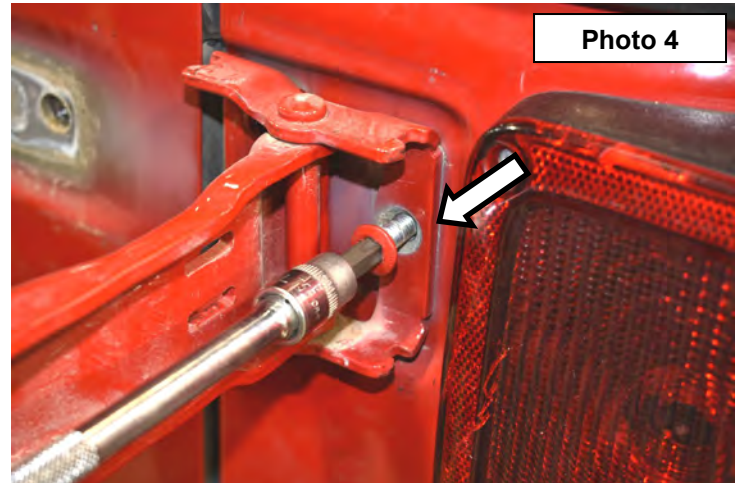
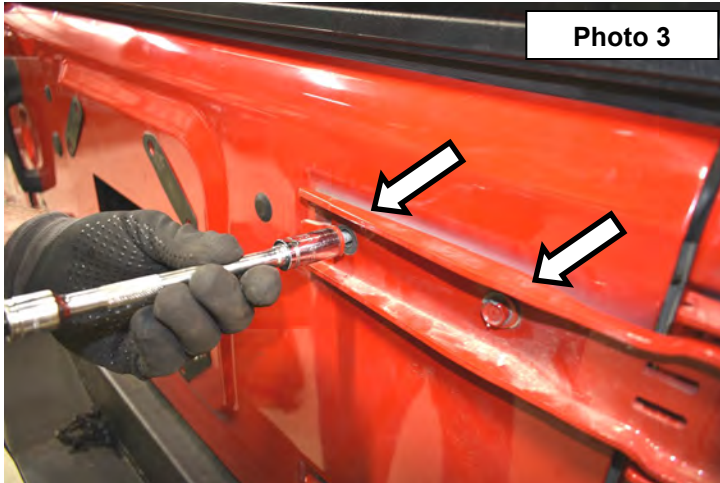


#### INSTALLATION INSTRUCTIONS

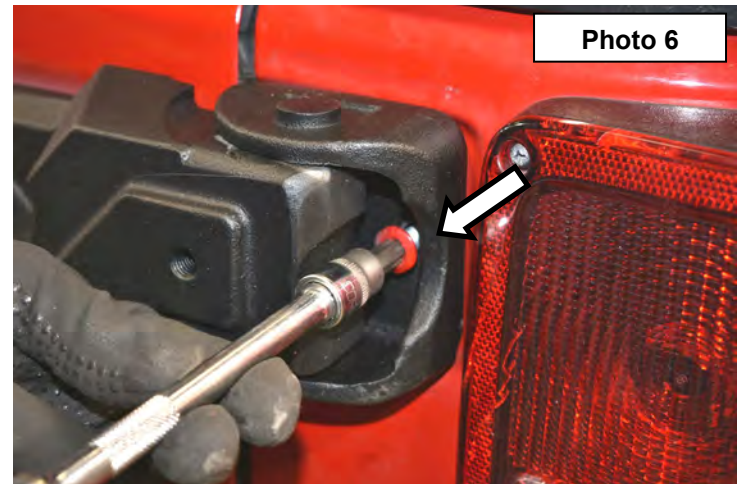
1. Remove the rear hinge covers as shown in **Photo 1 & 2**.
2. Remove the stock tire/wheel mount from the tailgate using a 13mm socket and disassemble the center taillight mount using T20 bit, separate the plastic housing, unplug light from wiring harness.



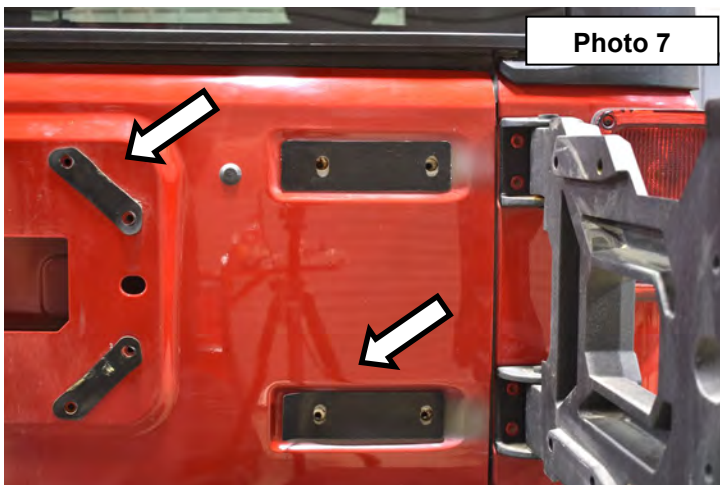
3. Ensure the tailgate is closed and support with a block of wood under the tailgate. Remove the hinge from the tailgate using a 13mm socket. **See Photo 3.**
4. Remove the hinge from the body with a T50 torx head bit. **See Photo 4.**



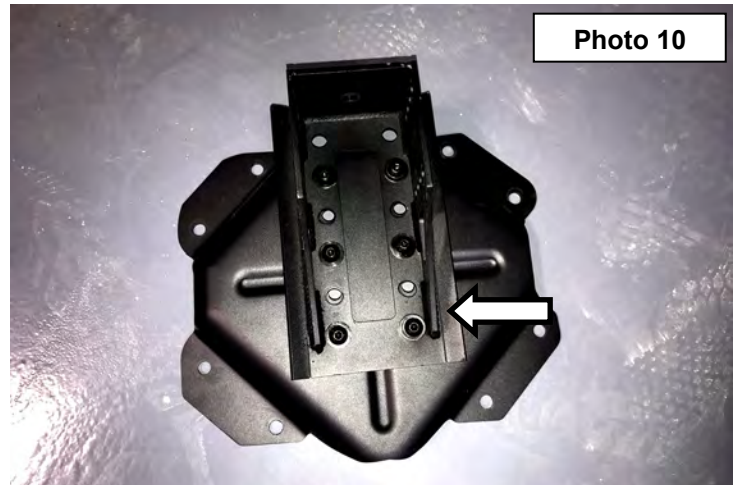
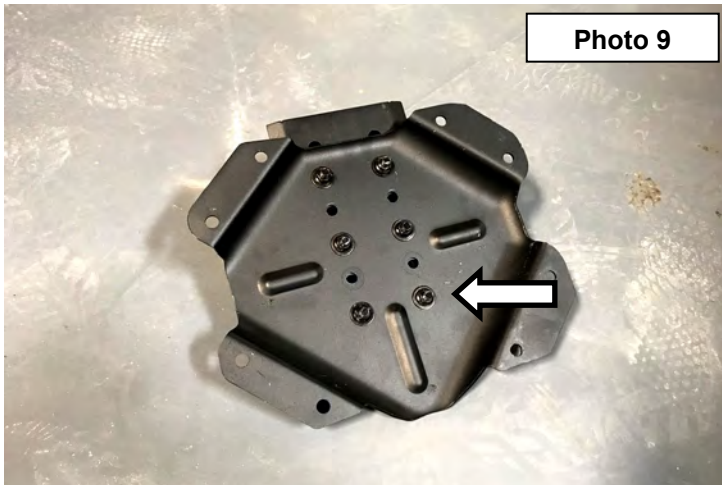
5. Position the Rough Country HD hinge. Align the holes in the body and install the factory hardware on the upper and lower mounts to secure to body. **See Photo 5 & 6.** Tighten using a T50 torx head bit.



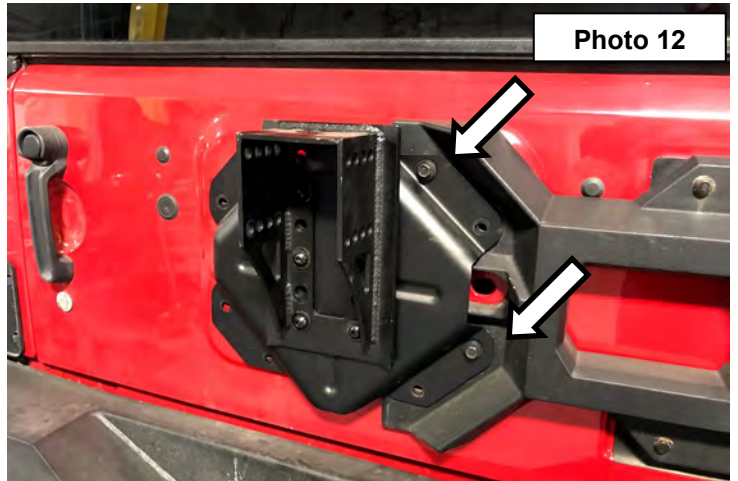
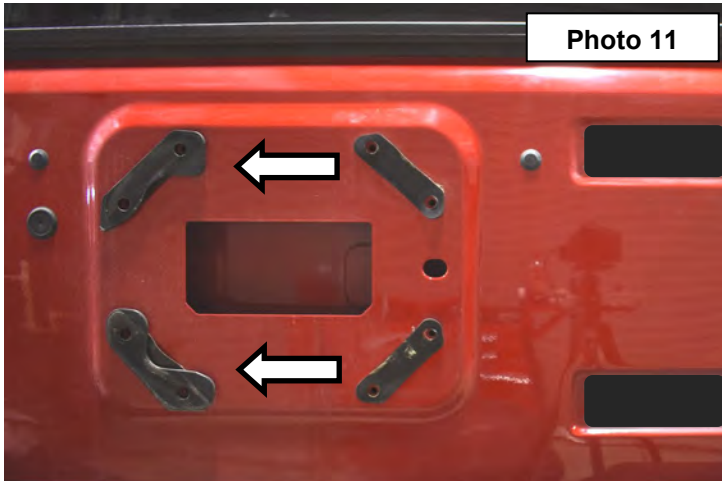
6. Place the supplied gaskets in place on the mounting holes. **See Photo 7.**
7. Secure the HD carrier to the tailgate using the supplied 8mm x 35mm bolts and washers. Tighten using a 12mm wrench. **See Photo 8.**



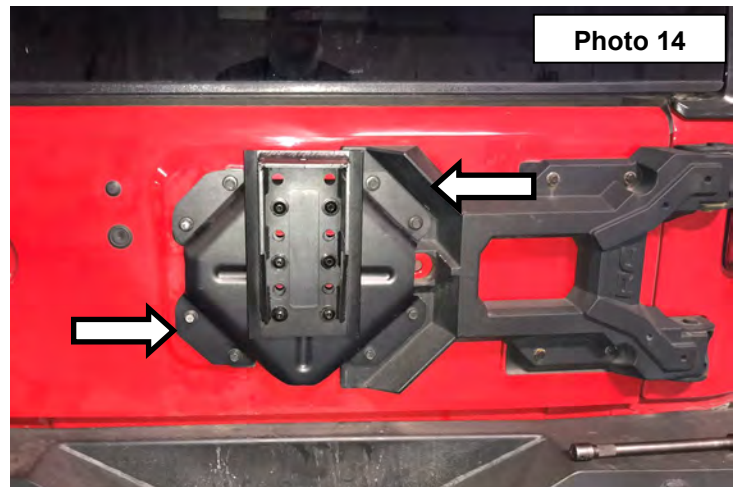
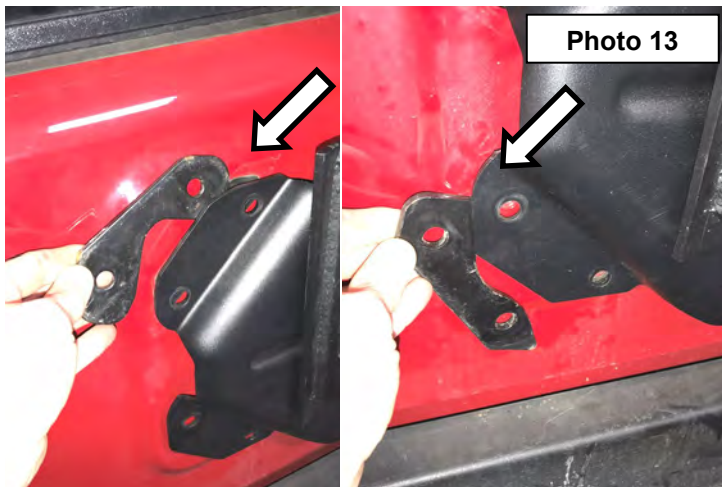
8. **NOTE:** *The height of this bracket can be adjusted when fitting the wheel and tire.* Install the carrier bracket on to the mounting plate using (6) of the supplied 10mm x 30mm Button head bolts, flat washers and (6) 10mm flange lock nuts. Tighten the hardware using a 6mm allen and a 14mm wrench. **See Photo 9 and 10.**



9. Place the supplied gaskets in place on the mounting holes on the outer side of the door. **See Photo 11.**  
10. Install the mount onto the tailgate mount using (2) of the OE bolts. **See Photo 12.**



11. Position the supplied spacers as shown in **Photo 13.**  
12. Install the remaining OE hardware into the mount. **See Photo 14.**



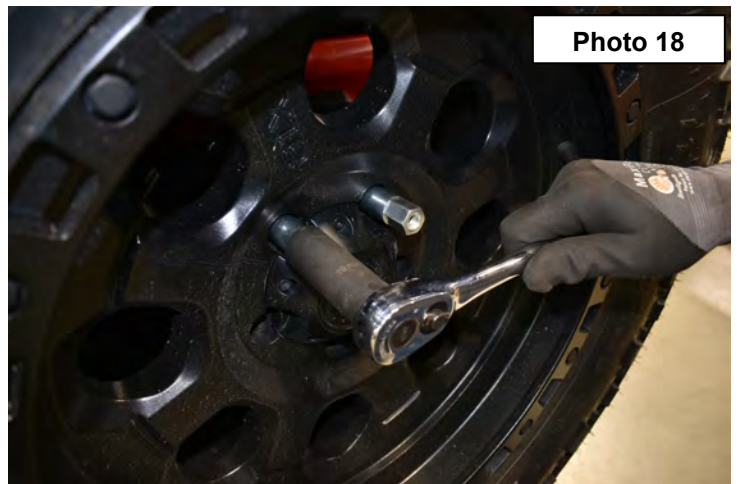
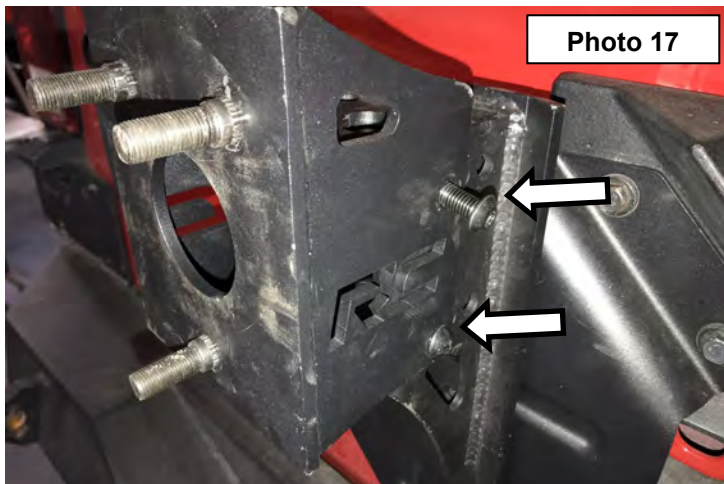
13. Tighten the factory bolts and washers in the carrier mount using a 13mm socket. **See Photo 15.**

14. Install the bracket in the carrier as shown in **Photo 16.**



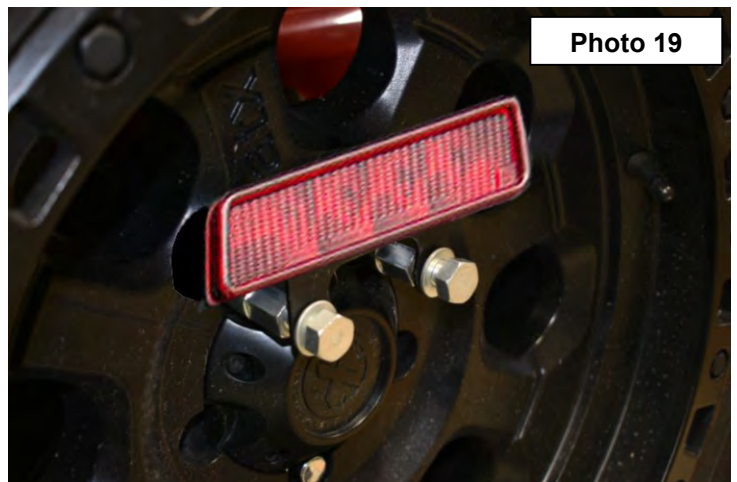
15. Secure with the (4) 10mm x 30mm Button head bolt, flat washers and (4) 10mm lock nut. **Photo 17.** Install the tire and wheel with one lug nut, adjust as needed and mark optimum location. Remove the tire/wheel from mount and tighten bolts using a 14mm wrench and 6mm allen wrench.

16. Install the tire/wheel and secure with the two long lugs as shown in **Photo 18** on the top two wheel studs.



17. Cut the third brake light free from the plastic housing just below the light. Secure the third brake light to the supplied bracket with the stock T20 screws,

18. Install the brake light bracket on the lugs with the supplied 1/2" x 1" bolts and lock washers and plug stock harness into the light. **See Photo 19.**



By purchasing any item sold by Rough Country, LLC, the buyer expressly warrants that he/she is in compliance with all applicable, State, and Local laws and regulations regarding the purchase, ownership, and use of the item. It shall be the buyer's responsibility to comply with all Federal, State and Local laws governing the sales of any items listed, illustrated or sold. The buyer expressly agrees to indemnify and hold harmless Rough Country, LLC for all claims resulting directly or indirectly from the purchase, ownership, or use of the items.

