

2014-18 Chevy Inner Fender Trim Panel

Thank you for choosing Rough Country for all your vehicle needs.

Please read instructions before beginning installation. Check the kit hardware against the kit contents shown below. Be sure you have all needed parts and know where they go.

If question exist, please call us @1-800-222-7023. We will be happy to answer any questions concerning this product.

Check all fasteners for proper torque. Check to ensure for adequate clearance between all components.

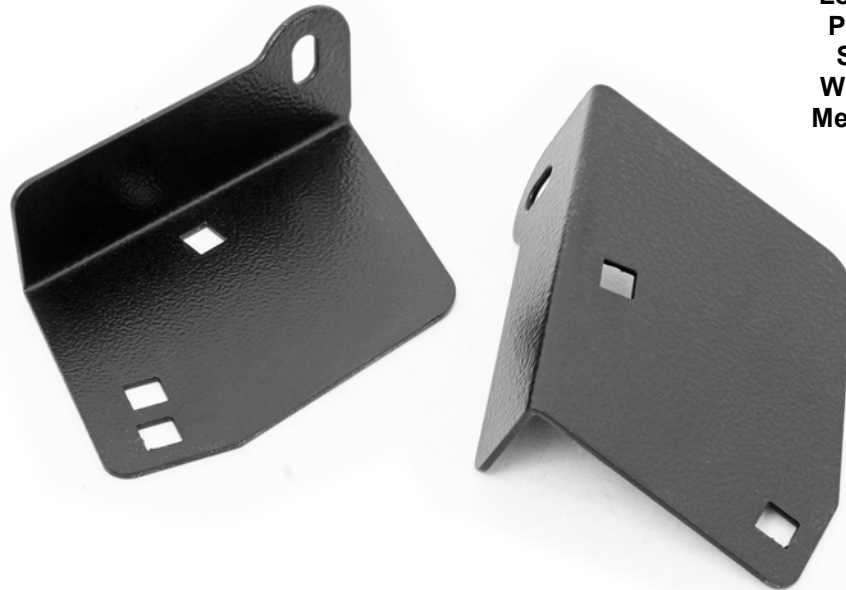
Check and retighten wheels at 50 miles and again at 500 miles. Periodically check all hardware for tightness.

KIT CONTENTS:

- 1-Drivers side inner trim panel
- 1-Passengers side inner trim panel

TOOLS NEEDED:

- 13mm wrench
- Body saw
- T15 torx
- Drill motor
- 3/16 drill
- Ratchet
- Pliers
- Locking pliers
- Paint marker
- Spray paint
- Wheel chocks
- Measuring tape

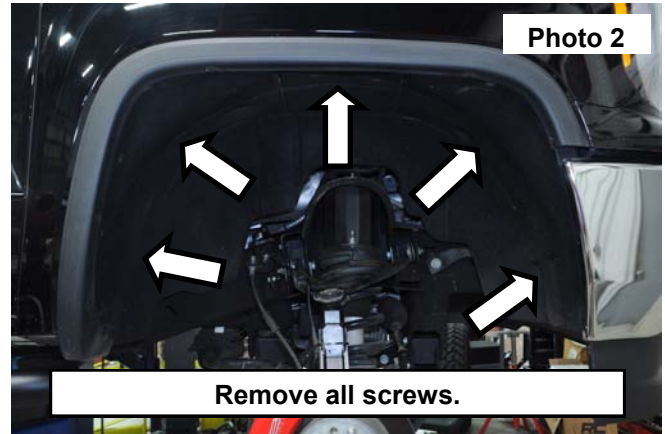


Torque Specs:

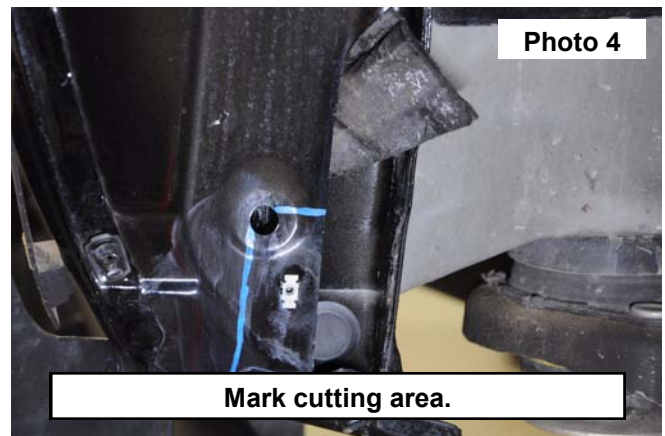
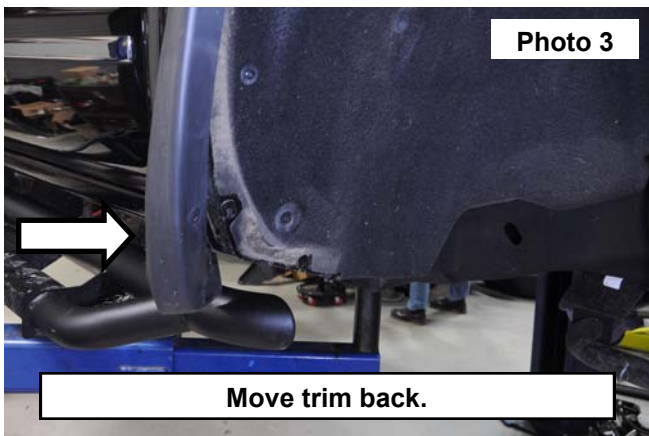
Size	Grade 5	Grade 8	Size	Class 8.8	Class 10.9
5/16"	15 ft/lbs	20ft/lbs	6MM	5ft/lbs	9ft/lbs
3/8"	30 ft/lbs	35ft/lbs	8MM	18ft/lbs	23ft/lbs
7/16"	45 ft/lbs	60ft/lbs	10MM	32ft/lbs	45ft/lbs
1/2"	65 ft/lbs	90ft/lbs	12MM	55ft/lbs	75ft/lbs
9/16"	95 ft/lbs	130ft/lbs	14MM	85ft/lbs	120ft/lbs
5/8"	135ft/lbs	175ft/lbs	16MM	130ft/lbs	165ft/lbs
3/4"	185ft/lbs	280ft/lbs	18MM	170ft/lbs	240ft/lbs



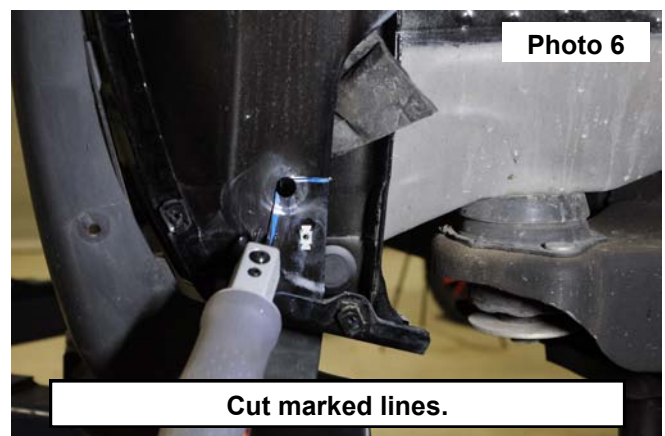
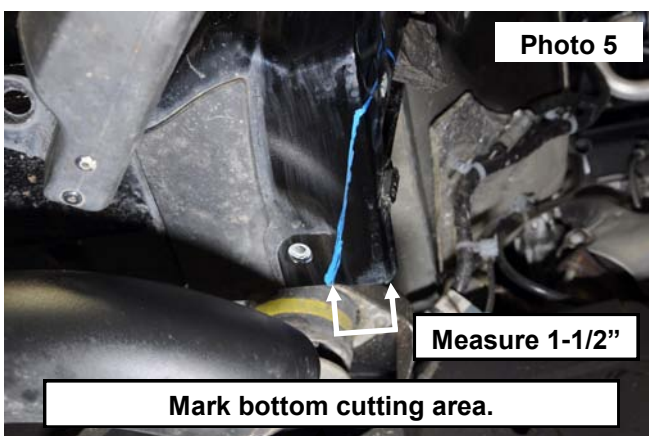
1. Block the rear wheels of the vehicle. Raise the front of the vehicle and support the frame with jack stands. Remove the front wheels and tires and set aside.
2. Remove the bolt in the bottom of the fender trim, using a 13mm wrench, save hardware for reuse. **See Photo 1.**
3. Remove all of the screws holding the fender well in, GMC models remove screws from the fender trim as well, using a T15 torx, save hardware for reuse, then remove inner fender. **See Photo 2.**



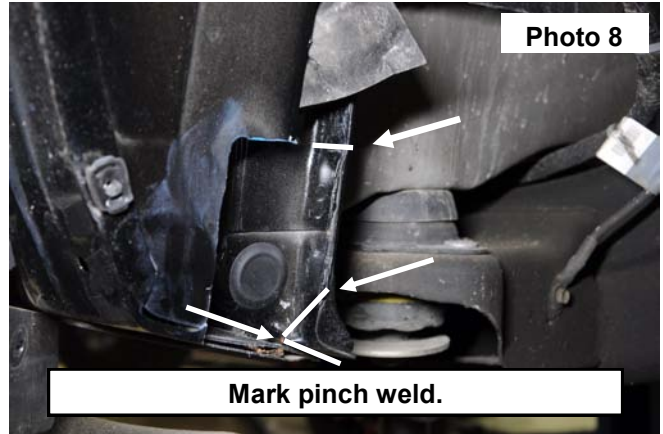
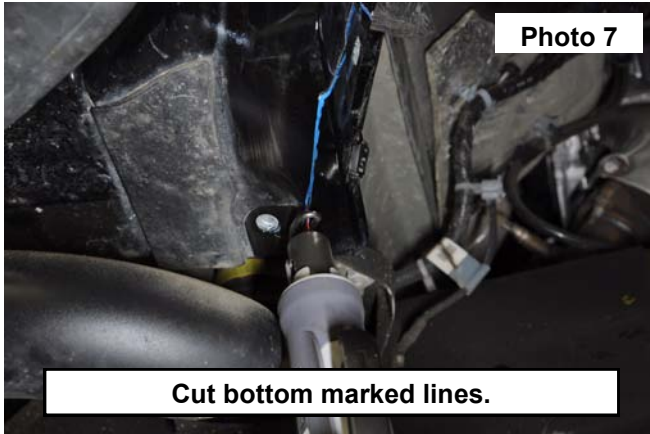
4. Remove the 2 screws in the bottom of the fender trim, pull back to clear the fender for trimming, use care when pulling trim from clips on fender, use a T15 torx. (Chevy models remove corner piece from fender) **See Photo 3.**
5. Push the insulation in fender up out of the way. Using the hole as a guide, mark from the top of the hole to the edge of the fender, then mark straight down to the bottom of the fender. **See Photo 4.**



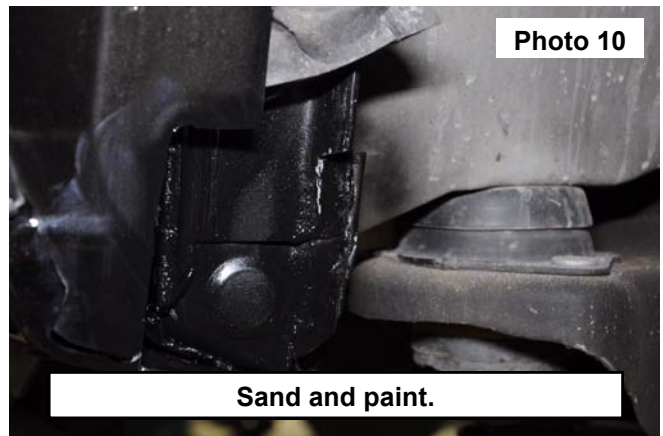
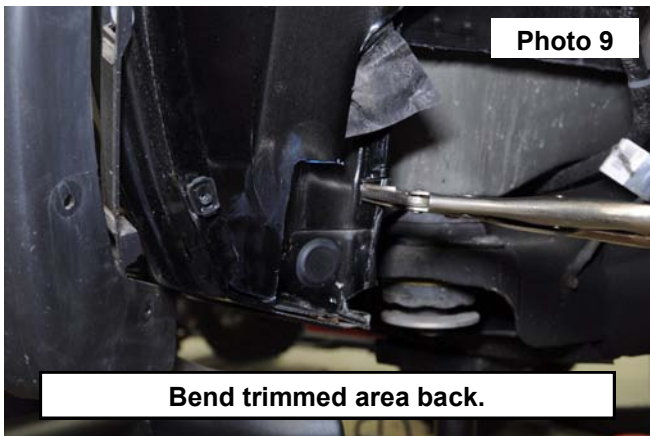
6. Marking the bottom of the fender, measure 1-1/2" from the front edge of the fender, then connect the line on the front side of the fender. **See Photo 5.**
7. Use a body saw cut the lines marked on the fender. **See Photo 6.**



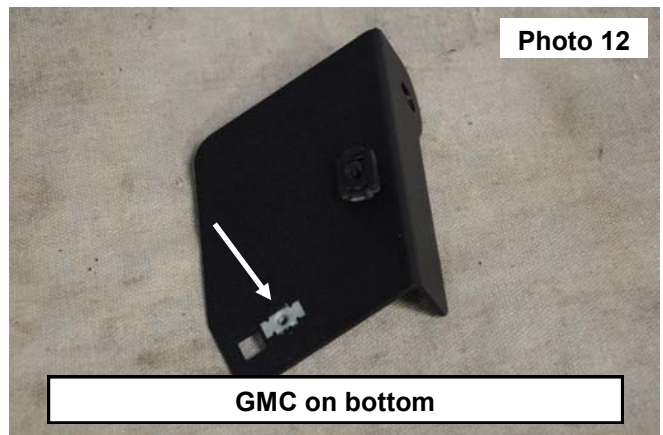
8. Continue to cut the marked area on the bottom of the fender, then remove. **See Photo 7.**
9. Mark the pinch weld, inline with the top cut on the fender, this will be cut the width of the pinch weld, mark the bottom of the pinch weld to cut the bottom corner off using a body saw. **See Photo 8.**



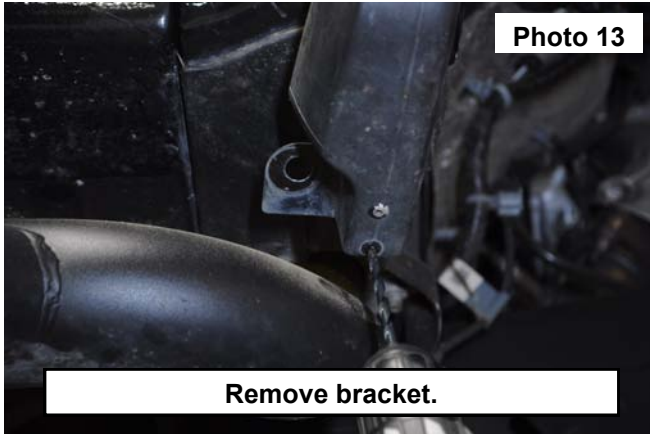
10. Using locking pliers to bend the pinch weld back around flat. **See Photo 9.**
11. Sand all cut areas smooth and paint, to prevent rust. **See Photo 10.**



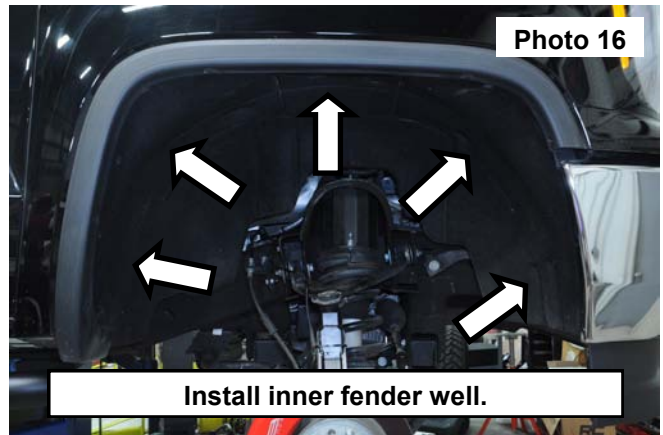
12. Remove the inner fender trim clips from the cut off part of fender well using a pair of pliers. **See Photo 11.**
13. Install the clips for Chevy or GMC in the holes on the fender trim panel.
14. Install clips into the fender trim panel for GMC on bottom on the passengers side bracket . **See Photo 12.**



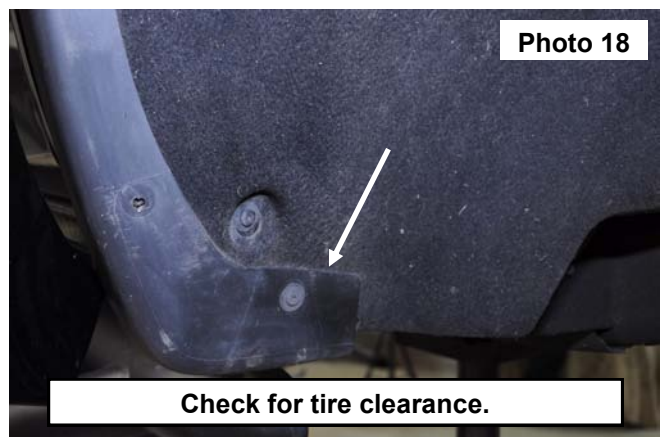
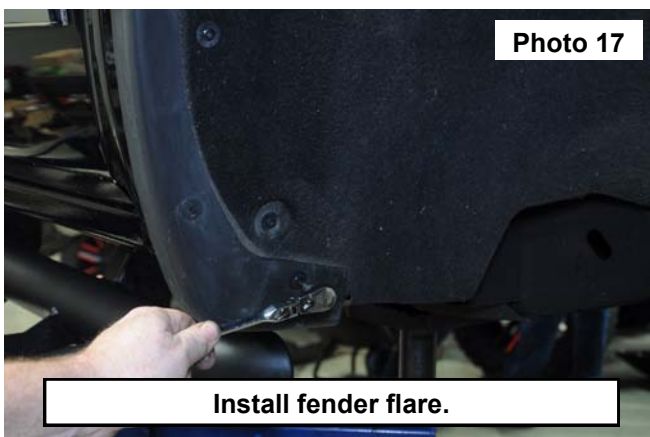
15. On GMC trucks only, remove the metal bracket from the bottom of the fender trim, using a 3/16 drill to remove rivets. **See Photo 13.**
16. Install the fender trim panel, using the stock bolt, tighten using a 13mm wrench. **See Photo 14.**



17. Make sure the clips on the front side are not covered by the trimmed part of the fender. **See Photo 15.**
18. Pull the insulation in fender back behind the new trim panel.
19. Install the inner fender liner using the original hardware, tighten using T15 torx. **See Photo 16.**



20. Reattach the fender trim using the 2 factory screws and the original hardware, Chevy models install the corner piece on the fender. tighten using a T15 torx. **See Photo 17.**
21. Install the wheels and tires and set on the ground, before the vehicle is driven check for tire clearance on the trim panel. **See Photo 18.**



By purchasing any item sold by Rough Country, LLC, the buyer expressly warrants that he/she is in compliance with all applicable , State, and Local laws and regulations regarding the purchase, ownership, and use of the item. It shall be the buyers responsibility to comply with all Federal, State and Local laws governing the sales of any items listed, illustrated or sold. The buyer expressly agrees to indemnify and hold harmless Rough Country, LLC for all claims resulting directly or indirectly from the purchase, ownership, or use of the items.

