



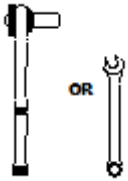
19-22 GMC Sierra 1500
Nylon Mud Flap Set, 5/8" Offset, Front
Mounting Diagram & Instructions
Kit# GCN29F

TO BE USED WITH SIERRA CAP PART #FC001K

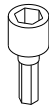
IMPORTANT:

Manufacturer is not responsible for negligent use of vehicle with mud flaps installed, including over-tightening of screws and bolts causing damage to vehicle or mud flaps.

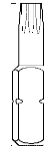
TOOLS REQUIRED-



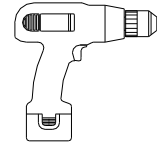
7/16" Open Wrench or
Socket Wrench



1/4" Socket Driver



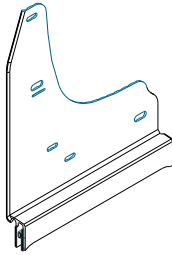
T15 Torx
Bit



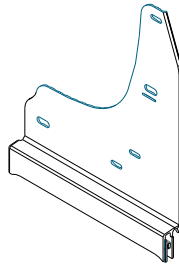
Electric or Rechargeable
Drill

FLAPS

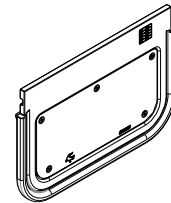
(1) Upper Mount
Front, DS
Part #768349



(1) UpperMount
Front, PS
Part #768350

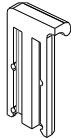


(2) Rubber Flap
Universal
12" x 8-3/4"

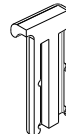


Please note: There will be a plastic piece in the upper mount channel. Please remove and discard.

(1) Nylon Cap
Driver Side
Part #080642
(Assembled on Upper Mount)



(1) Nylon Cap
Passenger Side
Part #080643
(Assembled on Upper Mount)



PARTS BAG # 767781

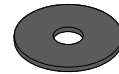
a) (4) Screw, Button Head
1/4"-20UNC x 5/8" SS, oxid.
Part #014078



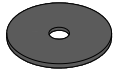
b) (6) Screw, Sheet Metal, Blk Ox.
1/4"Hex Washer Head, #8-18x1".
Part # 016055



c) (2) Washer, Flat
0.281" x 1", 18g, SS, oxid.
Part #018069



d) (6) Washer, Flat
0.203" x 1", 18g, SS, oxid.
Part #018070



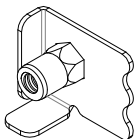
e) (2) Washer, Flat
0.281" x 1", 18g, SS, oxid
Part #018084



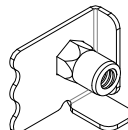
f) (2) Spring Nut
1/4"-20UNC, 27/32" Reach
Part #028011



g) (1) Mud Flap Clip
Driver Side
Part # 769312

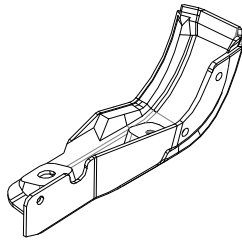


h) (1) Mud Flap Clip
Passenger Side
Part #769313

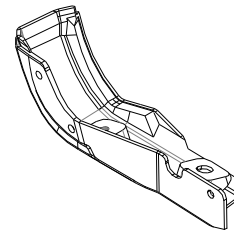


SOLD SEPARATELY: FC001K FINISHING CAPS

(1) Molded Cap
Driver's Side



(1) Molded Cap
Passenger's Side

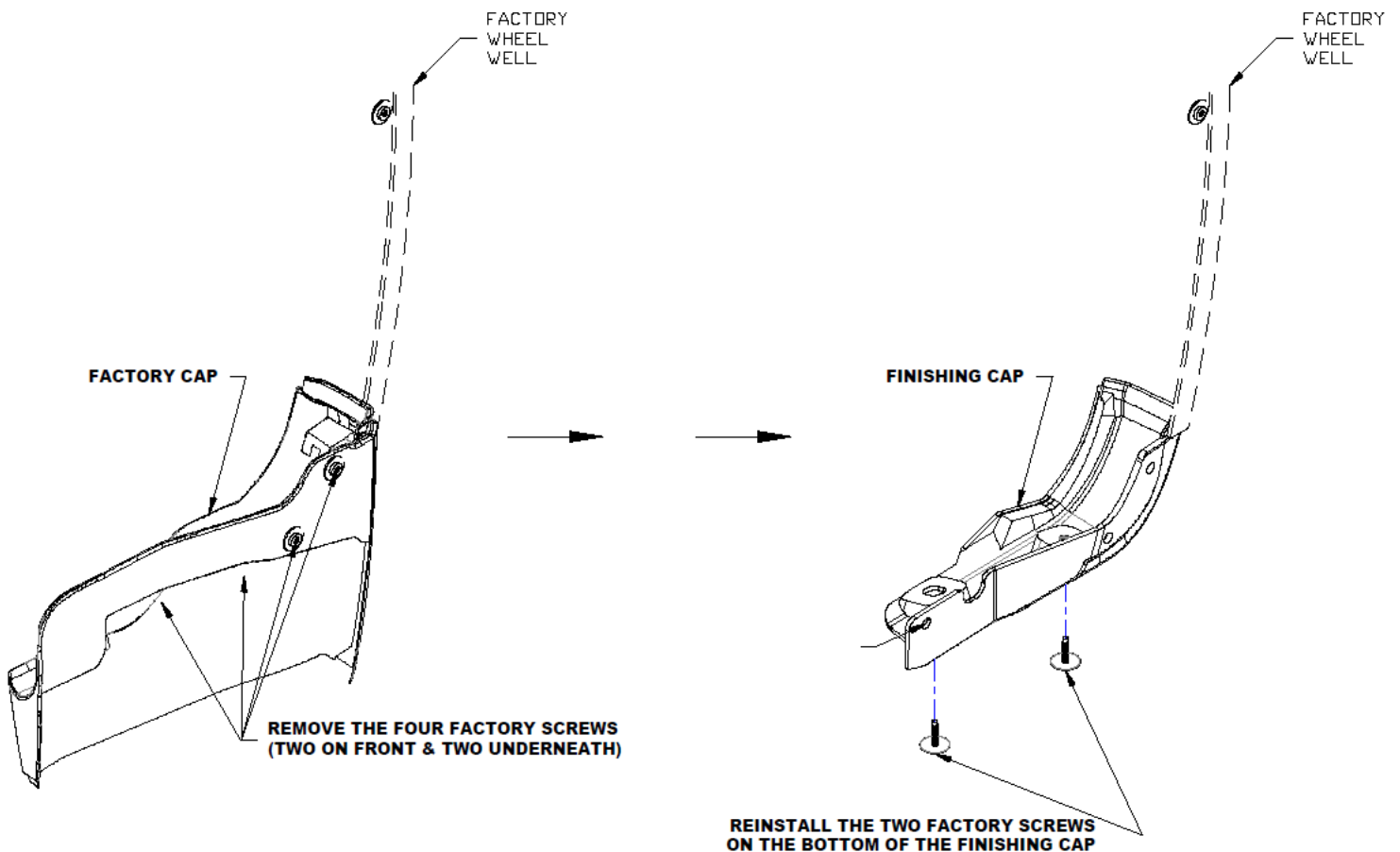


INSTALLATION - Start with installation of Truck Hardware Finishing Cap

(For ease of installation it is suggested that the wheel be removed)

CAPS:

1. Remove the 4 factory screws from the existing factory guard. Set this hardware aside for later reinstallation.
2. Because there is no external access to the interior push pin like on the rear guard, the front guard must be pulled off by hand.
3. Slightly peel back the red 3M tape on the finishing cap and fold back so it can be fully peeled after cap is in place.
4. Position cap, ensuring the top lip of the cap slides under the fender molding as shown.
5. Reinstall the two factory screws on the underside of the finishing cap. Be careful not to overtighten.
6. Finish peeling 3M tape and press firmly on the bottom and side of the finishing cap to ensure a proper seal.
7. Repeat procedure on passenger side.



Please check out our YouTube channel to see an install video for this application.



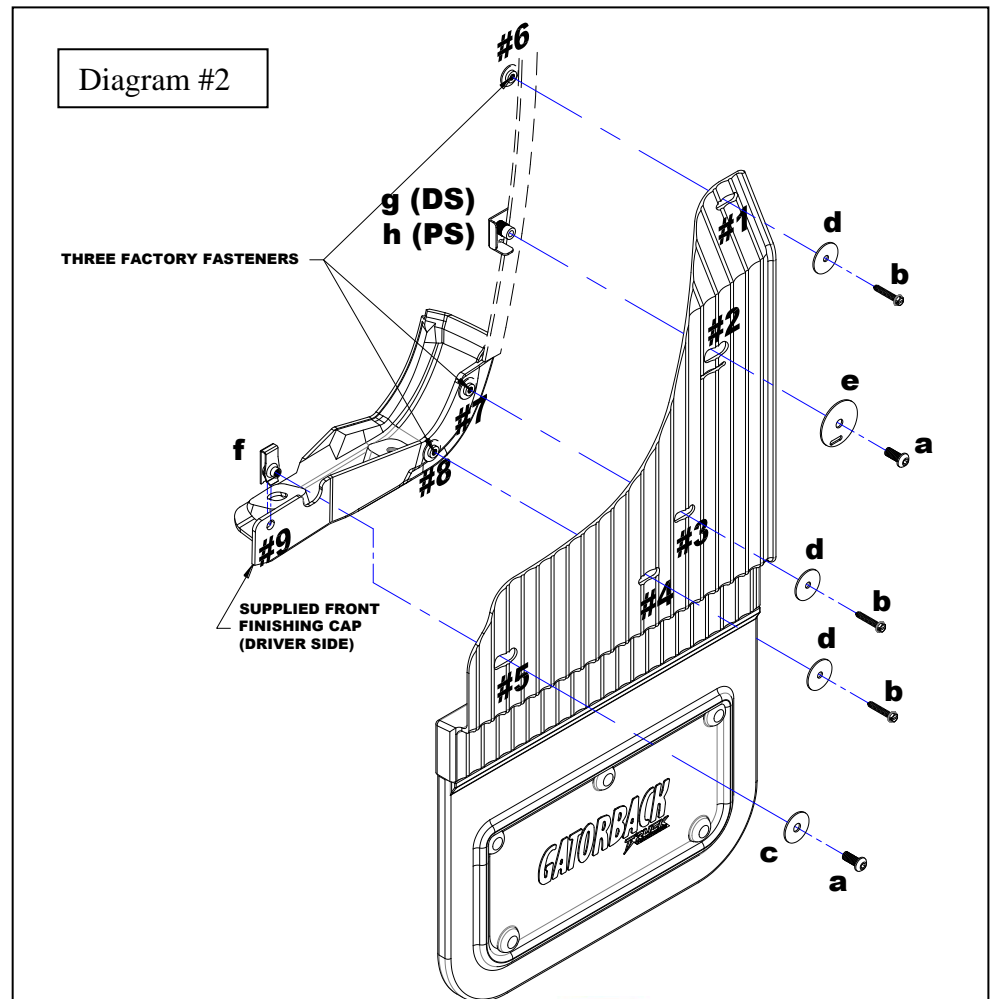
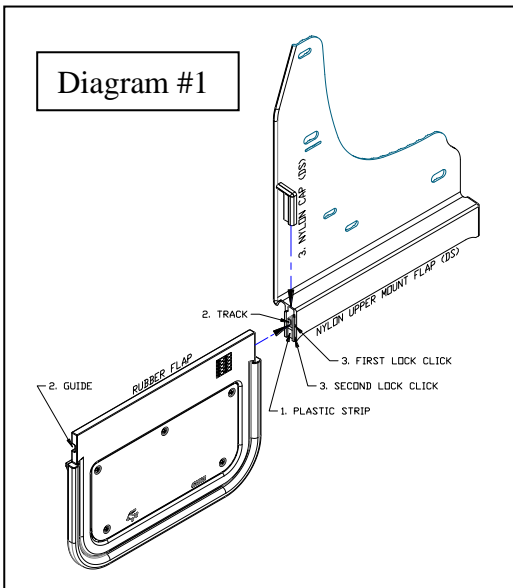
Sierra Front

ASSEMBLY OF NYLON MUD FLAPS:

1. Remove locking caps from nylon upper mounts and set aside for reinstallation.
2. Remove and discard the plastic strip inside the track at the bottom of the nylon upper mount. (See Diagram #1).
3. Slide rubber guide into track of nylon upper mount.
4. Reinstall locking cap(s) on bottom of nylon upper mount. Note: To fully lock this cap into place, you should hear two clicks. When the cap is fully locked, it will be even with the offset part of the upper mount. (See Diagram #1).
5. Repeat Procedure for second mud flap.

MUD FLAPS:

1. Before you install your Mud Flap Set, see the diagram and parts list for all necessary parts. Start on the driver's side.
2. Remove factory screw from wheel well hole #6. *Note* Factory screws on holes #7 & #8 will have been removed during cap installation.
3. Install spring nut (f) on plastic cap hole #9.
4. Loosely install mount clip (g) on mud flap hole #2 using a button head screw (a) and flat washer (e).
5. Secure mud flap through hole #5 into spring nut (f) on plastic cap hole #9 using supplied button head screw (a) and washer (c).
6. Install mount clip (g) in hole #2 behind the fender lip.
7. Secure mud flap through hole #1 into hole #6 using supplied screw (b) and washer (d).
8. Secure the mud flap through hole #3 and #4 into holes #7 & #8 using supplied screws (b) and washers (d). Loosely secure at this point.
9. Align the top of the mud flap with the beveled edge of the factory flare. Tighten fastener on hole #1.
10. Using a bubble level or other levelling tool, ensure that the mud flap is level. Tighten fasteners.
11. Repeat procedure for passenger side.



Please check out our YouTube channel to see an install video for this application.





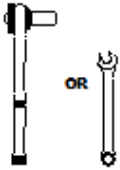
19-22 GMC Sierra 1500 Nylon Mud Flap Set, 5/8" Offset, Rear Mounting Diagram & Instructions Kit# GCN29R

TO BE USED WITH SIERRA CAP PART #FC001K

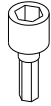
IMPORTANT:

Manufacturer is not responsible for negligent use of vehicle with mud flaps installed, including over-tightening of screws and bolts causing damage to vehicle or mud flaps.

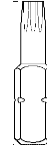
TOOLS REQUIRED-



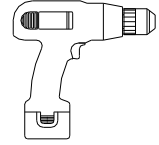
7/16" Open Wrench or
Socket Wrench



1/4" Socket Driver



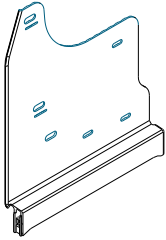
T15 Torx Bit



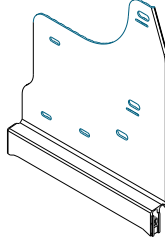
Electric or Rechargeable
Drill

FLAPS

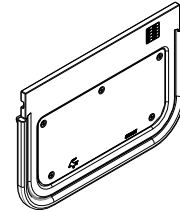
(1) Upper Mount
Rear, DS
Part #768351



(1) Upper Mount
Rear, PS
Part #768352

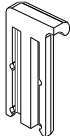


(2) Rubber Flap
Universal
12" x 8-3/4"

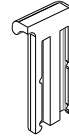


Please note: There will be a plastic piece in the upper mount channel. Please remove and discard.

(1) Nylon Cap
Driver Side
Part #080642
(Assembled on Upper Mount)

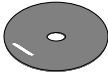


(1) Nylon Cap
Passenger Side
Part #080643
(Assembled on Upper Mount)



PARTS BAG # 767778

a) (4) Washer, Flat
0.281" x 1", 18g, SS, ox.
Part #018084



b) (6) Washer, Flat
0.203" x 1", 18g, SS, ox.
Part #018070



c) (2) Washer, Flat
0.281" x 1", 18g, SS, ox.
Part #018069



d) (6) Cap Screw,
1/4"-20UNC x 5/8"
Part #014071



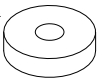
e) (6) Screw, Sheet Metal, Blk Ox
1/4" Hex Washer Head, #8-18x1"
Part # 016055



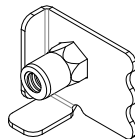
f) (2) Spring Nut
1/4"-20UNC, 27/32" Reach
Part #028011



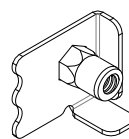
g) (2) Washer, Flat
5/16" x 1" HDPE
Part #018036



h) (2) Mud Flap Clip
Driver Side
Part # 769312

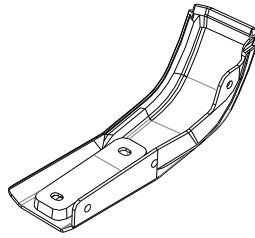


i) (2) Mud Flap Clip
Passenger Side
Part #769313

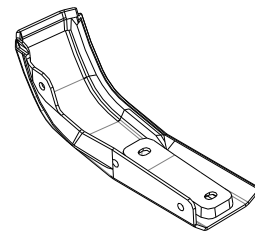


SOLD SEPARATELY: FC001K FINISHING CAPS

(1) Molded Cap
Driver's Side



(1) Molded Cap
Passenger's Side

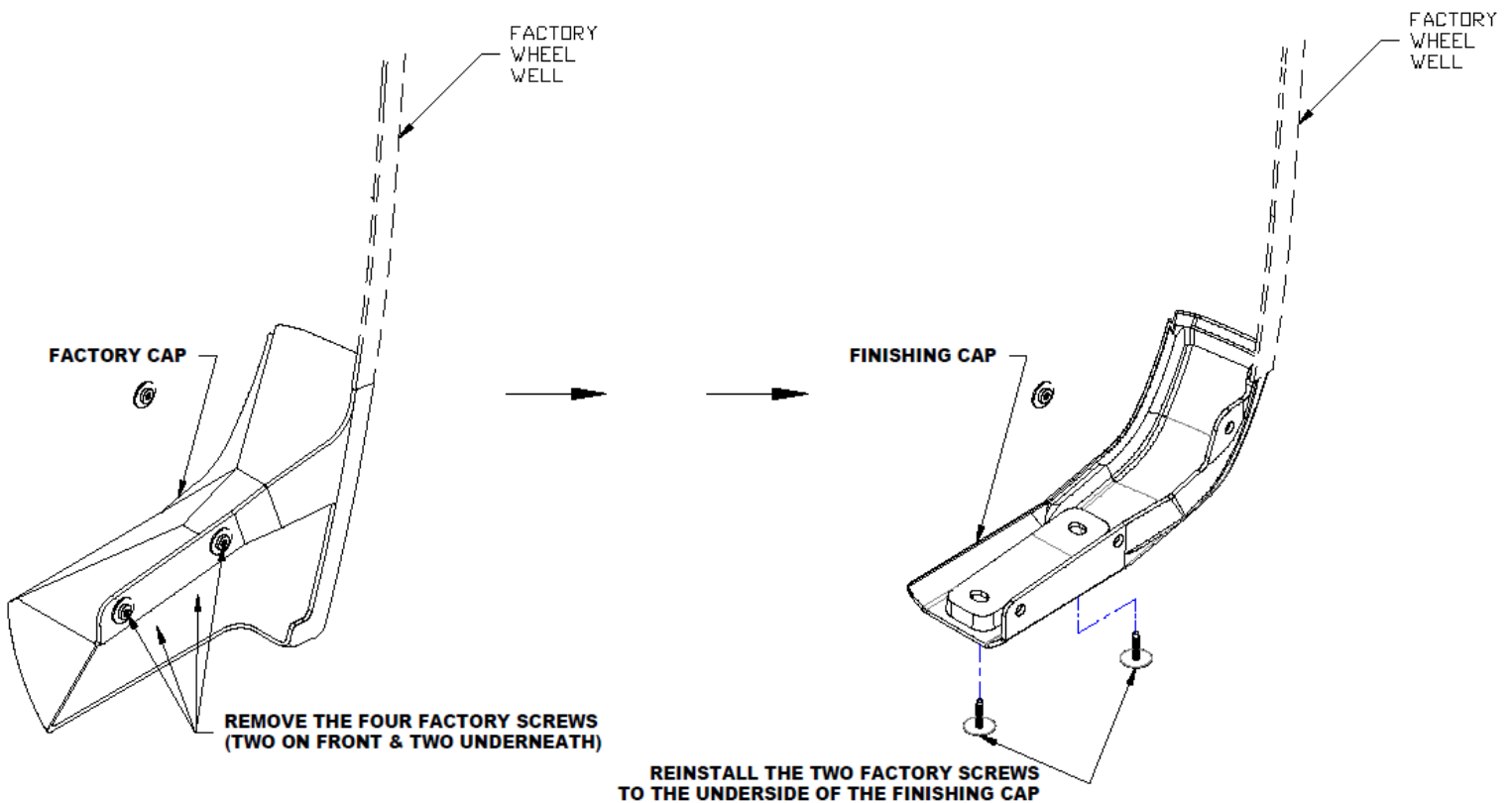


INSTALLATION - Start with installation of Truck Hardware Finishing Cap

(For ease of installation it is suggested that the wheel be removed)

CAPS:

1. Remove the 4 factory screws from the existing factory guard. Set this hardware aside for later reinstallation.
2. Use a 5/16" socket on an extension to collapse the push pin on the inside of the factory cap. You can reach the push pin through the cavity of the fender (See video).
3. Slightly peel back the red 3M tape on the finishing cap and fold back so it can be fully peeled after cap is in place.
4. Position cap, ensuring the top lip of the cap slides under the fender molding as shown.
5. Reinstall the two factory screws on the underside of the finishing cap. Be careful not to overtighten.
6. Finish peeling 3M tape and press firmly on the bottom and side of the finishing cap to ensure a proper seal.
7. Repeat procedure on passenger side.



Please check out our YouTube channel to see an install video for this application.



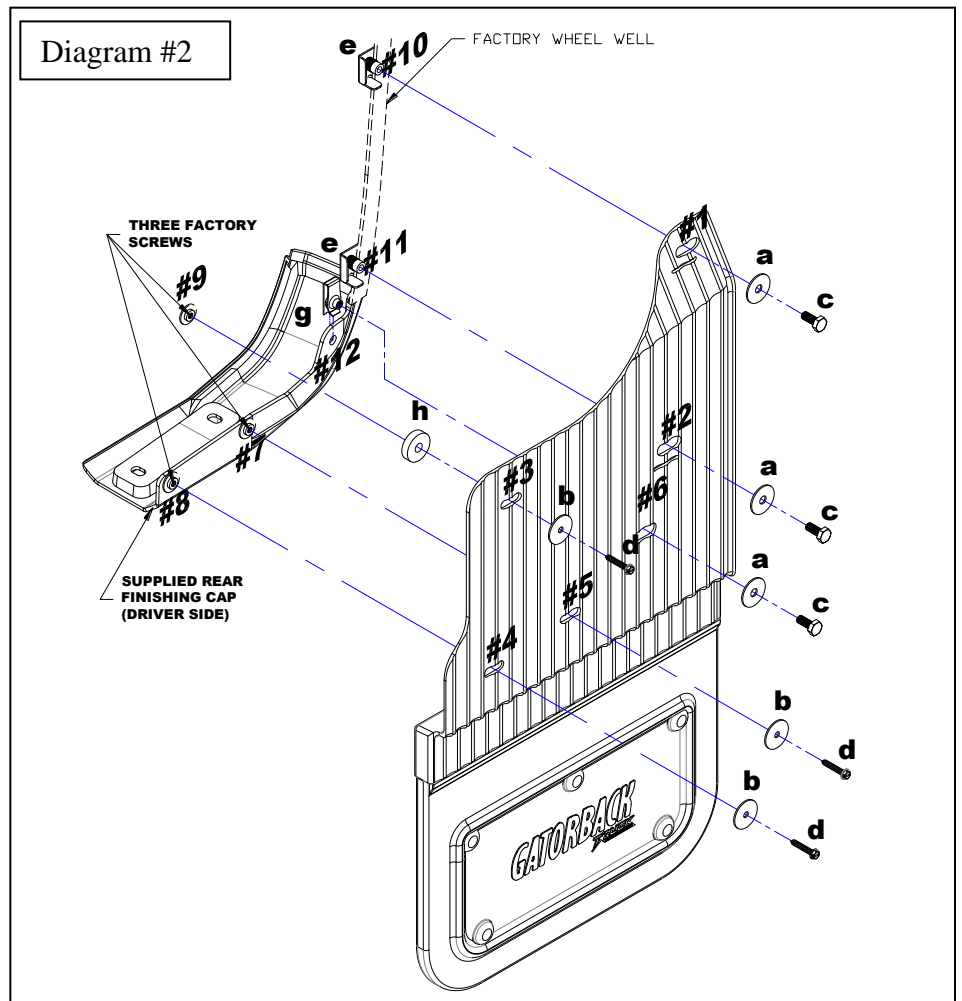
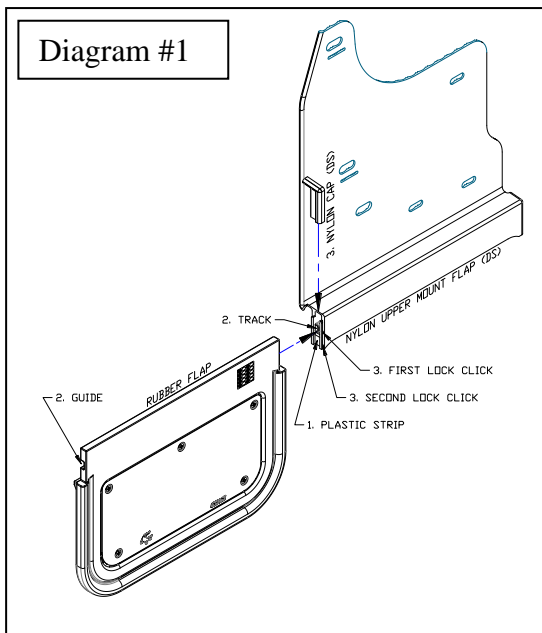
Sierra Rear

ASSEMBLY OF NYLON MUD FLAPS:

1. Remove locking caps from nylon upper mounts and set aside for reinstallation.
2. Remove and discard the plastic strip inside the track at the bottom of the nylon upper mount. (See Diagram #1).
3. Slide rubber guide into track of nylon upper mount.
4. Reinstall locking cap(s) on bottom of nylon upper mount. Note: To fully lock this cap into place, you should hear two clicks. When the cap is fully locked, it will be even with the offset part of the upper mount. (See Diagram #1).
5. Repeat Procedure for second mud flap.

MUD FLAPS:

2. Before you install your Mud Flap Set, see the diagram and parts list for all necessary parts. Start on the driver's side.
2. Remove factory screw from wheel well hole #9. *Note* Factory screws on holes #7 & #8 will have been removed during cap installation.
3. Install spring nut (g) on finishing cap hole #12.
4. Loosely install mount clips (e) to mud flap holes #1 & #2 using a cap screw (c) and flat washer (a)
5. Secure mud flap through hole #3 into factory hole #9 using supplied screw (d), washer (b), and plastic washer (h).
6. Secure mud flap in holes #1 & #2 using mount clips (e) #10 & #11 behind fender lip.
7. Secure the mud flap through hole #6 into spring nut on hole #12 using supplied bolt (c) and washer (a). Loosely secure at this point.
8. Secure mud flap through holes #4 & #5 into plastic cap holes #7 & #8 supplied screws (d) and washers (b). Loosely secure at this point
9. Using a bubble level or other levelling tool, ensure that the mud flap is level. Tighten fasteners.
10. Repeat procedure for passenger side.



Please check out our YouTube channel to see an install video for this application.

