



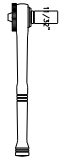
GATORBACK MUDFLAPS

2017-2022C, Ford F-350/F-450 Dually Rear Mount Bracket with Mud Flap Mounting Diagram & Instructions GCR49R

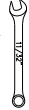
IMPORTANT:

The manufacturer is not responsible for negligent use of vehicle with mud flaps installed, including over-tightening of screws and bolts causing damage to vehicle or mud flaps.

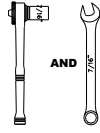
TOOLS REQUIRED:



OR

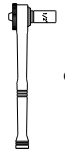


10mm open or
socket wrench



AND

7/16" open and
socket wrench



OR



3/8" open or
socket wrench



Push Pin
Removal Tool



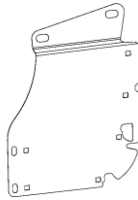
#2 Robertson
Screwdriver
(truck w/o Flare only)



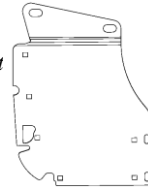
Awl/Pick
(truck w/ OE Liners)

BRACKETS

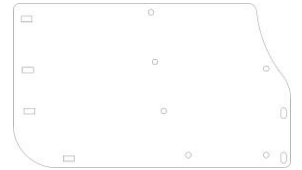
1) (1) Mount Bracket,
Rear, DS
Part # 759828



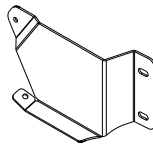
1) (1) Mount Bracket
Rear, PS
Part # 759829



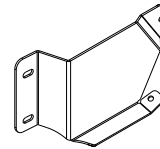
2) (2) Backing Panel
Rear, Dually
Part #759905/906



3) (1) Brace
Rear, DS
Part # 759830



3) (1) Brace
Rear, PS
Part # 759831



PARTS BAG #759898

a) (10) Capscrew, Zinc Plt
1/4" - 20UNC x 3/4"
Part #014030



b) (20) Screw, Sheet Metal
SS, #12 x 1-1/2" HWH
Part # 010045



c) (10) Nut, Hex
Zinc, 1/4" - 20UNC
Part # 025021



d) (20) Nut, Expansion
Nylon, Natural #12
Part #054059



e) (20) Washer, Flat
Alum., 0.281" x 1"
Part #018052



f) (20) Washer, Flat
O.D. 1.5" X I.D. 0.281"
Part # 018056



g) (10) Washer, Lock
Zinc, 1/4" Helicoil Spring
Part # 024009



h) (2) Screw Mach.
M6-1x35mm, Hex
Part #012028

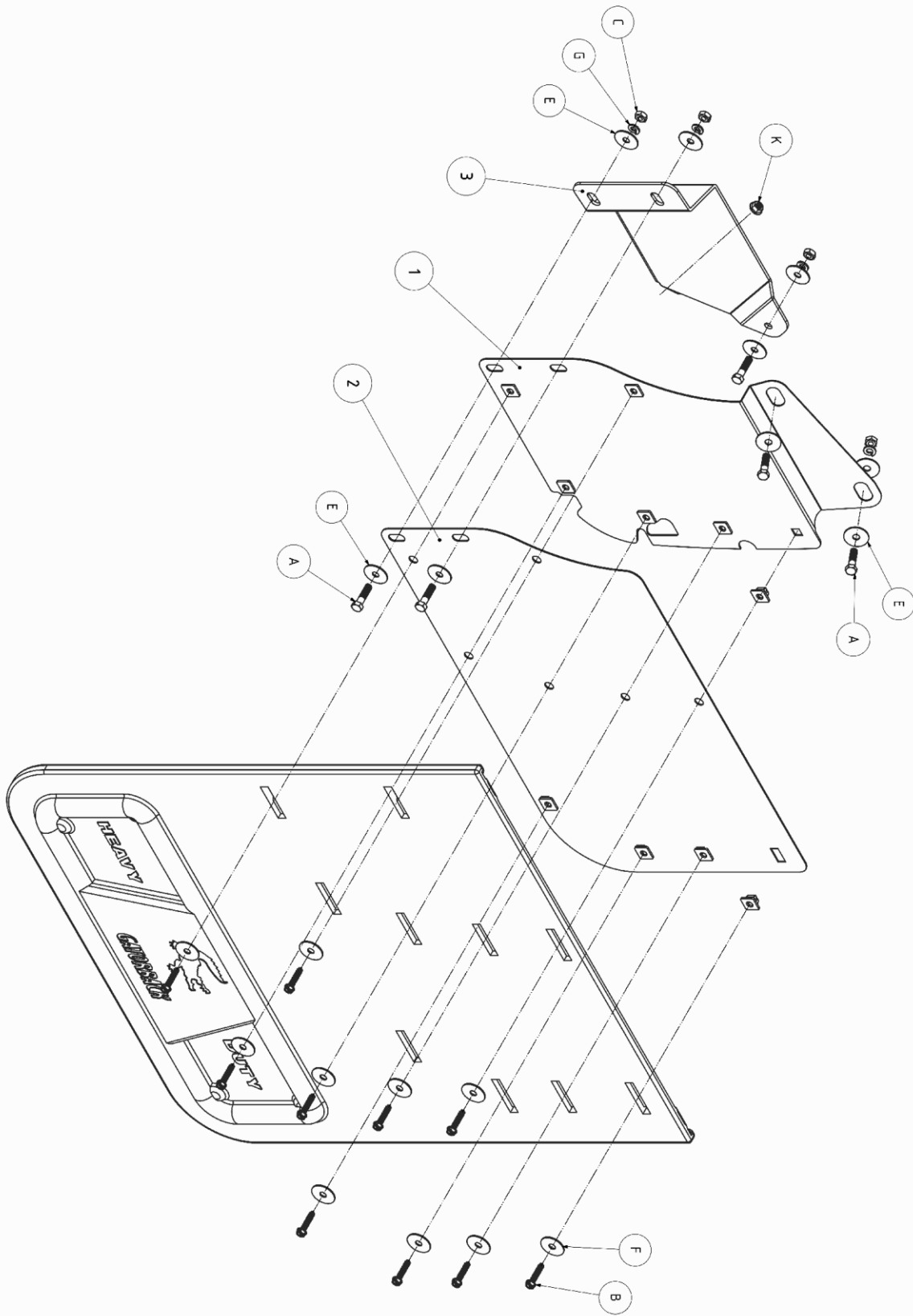


i) (2) Screw, Tech
#10 x 1", SS
Part #010009



k) (2) Flange Nut
Serrated, M6
Part # 025025





Legend

A) 014030
F) 018056

B) 010045
G) 024009

C) 025021
H) 012028

D) 054059
J) 010009

E) 018052
K) 025025

Installation: These instructions are best used in conjunction with our install video, which can be found on our YouTube page

(For ease of installation it is suggested that the wheel be removed)

Refer to diagram on following page.

1. Mark holes on Dual Rear Wheel (DRW) plastic fender liner, using Backing Panel (759906) as a template. Align center of rectangle holes on Backing Panel with push pins on outside edge of DRW fender opening.
2. Cut or drill corresponding 1/2 inch holes in DRW fender liner.
3. Remove 4 push pins, and lower center screw securing fender liner to DRW fender lip. Flip fender liner up onto tire to provide access to install brackets. Remove metal u-nut from lower DRW fender lip.
4. Prepare brackets by installing 6 nylon expansion nuts (054059) into the Mount Bracket (759828/759829). Install 4 nylon expansion nuts into center of rectangle holes in Backing Panel (759906). Make sure all expansion nuts are seated properly. Tape around center-top edge of Mount Bracket and Backing Panel to prevent damage to painted parts on inner fender.

Note: Brackets must be installed loose initially. This allows for adjustment to properly align with the Backing Panel.

5. Position Rear Brace (759830/759831) behind inner wheel well (see diagram). Place Rear Brace bottom tab over lower factory fender bolt and nut on the aluminum box. Loosely attach M6 serrated flange nut (025025). Loosely attach top of the Rear Brace through factory hole, using 1/4" capscrew, aluminum washers, lock washer, and nut.
6. Position the Mount Bracket behind aluminum inner fender lip. Loosely install two upper 1/4" capscrews, aluminum washers, lock washers, and nuts. Note: You may reuse single factory M6 bolt.
7. Position Backing Panel behind DRW (outer) fender lip, and in front of aluminum (inner) fender lip.
8. Loosely install all three brackets together using two 1/4" capscrews, aluminum washers, lock washers, and nuts (see diagram).
9. Temporarily secure Backing Panel to outer edge of DRW fender lip using 2 sheet metal screws. Note: Screws need to be removed and replaced to install rubber in a later step.
10. Use a Bubble Level (aka Spirit Level) on top edge of Backing Panel, and adjust to be as level as possible.
11. Align Mount Bracket with Backing Panel bottom and inside edges. Mount Bracket expansion nuts should line up with the round holes in the Backing Panel once properly aligned.
12. With Mount Bracket properly aligned to the Backing Panel, tighten all existing bracket fasteners. You may use a 1/4" self tapping screw at lower factory hole location in lower DRW fender lip (i.e. where metal u-nut was removed), to secure the backing panel alignment. Remove temporary fasteners on outside edge of DRW fender if used.
13. Lower fender liner, and insert behind DRW fender lip (factory position of liner was on top). Verify access to nylon expansion nuts. Adjust plastic liner as necessary.
14. Position mud flap over fender liner (which now covers the Backing Panel), lining up holes in mud flap with the holes in the bracket. Loosely install sheet metal screws and stainless steel washers.
15. Place a bubble level on the bottom edge of the mud flap, and adjust as necessary to make mud flap level.
16. Tighten center screws first, then continue to the remaining fasteners, being careful not to over tighten and strip the nylon expansion nuts.